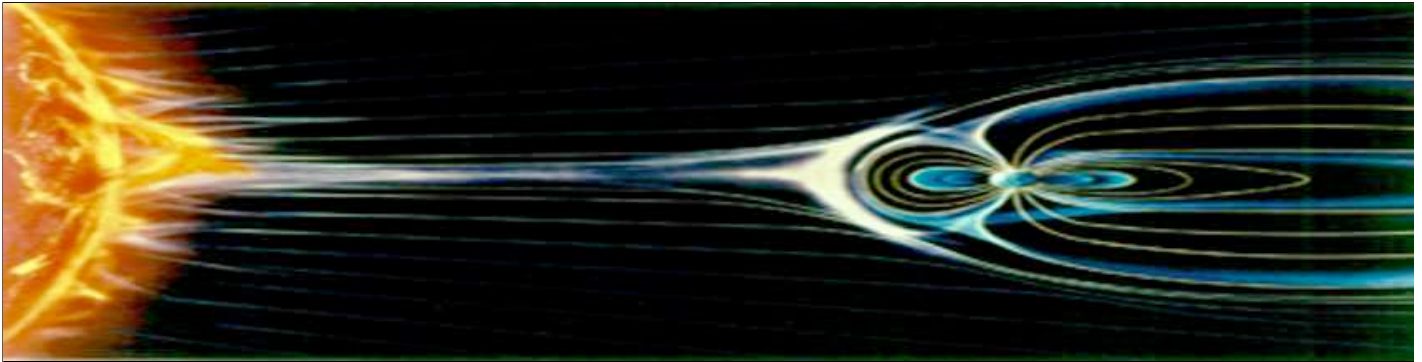


Jack Venrick

From: "Jack Venrick" <jacksranch@skynetbb.com>
To: <jacksranch@skynetbb.com>
Sent: Friday, June 27, 2008 1:06 PM
Subject: Dr. Willie Soon's Presentation at Good Neighbor Law Forum March 15, 2008 Debunking Gore's Political Junk Science Re. CO2
(NOTE - 2MB Email size)

To: Washington State Senate, House, Supreme Court, King County Council, Association of Washington Cities, King County Ag, DDES, DOE, Senators Cantwell & Murray, Representative Representative Reichert, Property Rights Movement, Freedom Foundations, Media, Friends



It's The Sun Stupid Not CO2

The following presentation was given by Dr. Willie Soon's before the Good Neighbor Law Forum March 15, 2008.

He has kindly given his permission to use his presentation slides in this email with the following caveat.

The explanation of each slide is strictly from my notes and interpretation of the presentation.

Roni Sylvester of www.goodneighborlaw.com who sponsored the Cheyenne Good Neighbor Forum has also given her permission.

Please note: You may review and order the 3 DVD pack which includes Dr. Willie Soon's talk at at the following site.

http://www.goodneighborlaw.com/Forum_GN/2008Forum/4-15DVDs.htm



Dr. Soon is an astrophysicist at the Solar and Stellar Physics Division of the Harvard Smithsonian Center for Astrophysics pointing out the truth.

Global Warming 101: Al Gore's CO₂ Theory

Willie Soon (vanilien@earthlink.net)

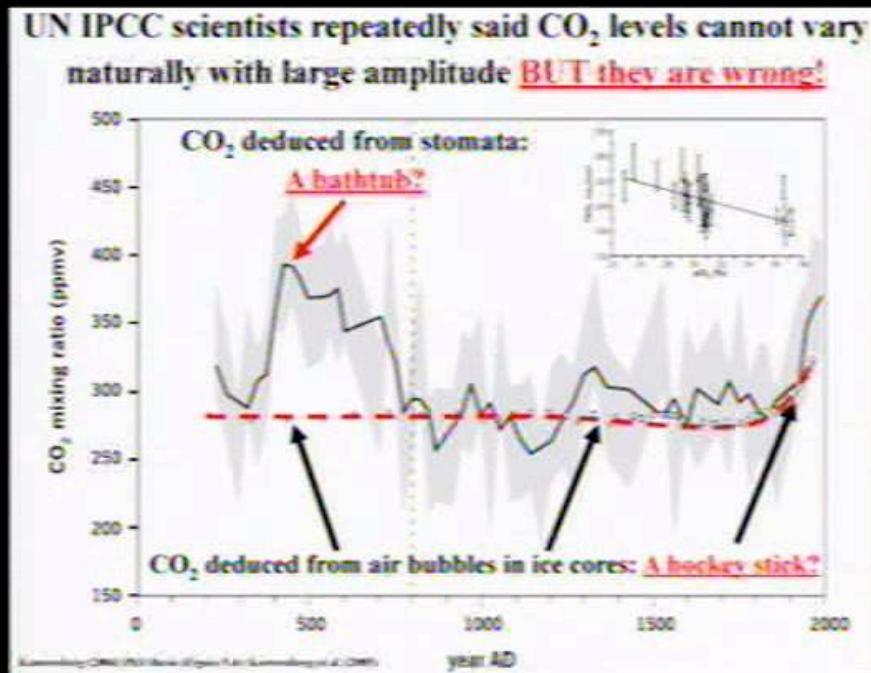
- Popular claims of a 2000-year CO₂ hockey stick and the present CO₂ level of 380 ppm never been seen since at least the past 650,000 years **can be shown to be false.**
- The level of atmospheric CO₂ is controlled by temperature and other biological and chemical variables *not the other way around.*

Al Gore's unscientific opinion in red, Dr. Soon's scientific findings in black



Dr. Soon says air bubbles analyzed in ice cores are very dirty and not a good source to use for global climate theory.

He suggests trees are a better recorder source of CO₂. Please see following chart.

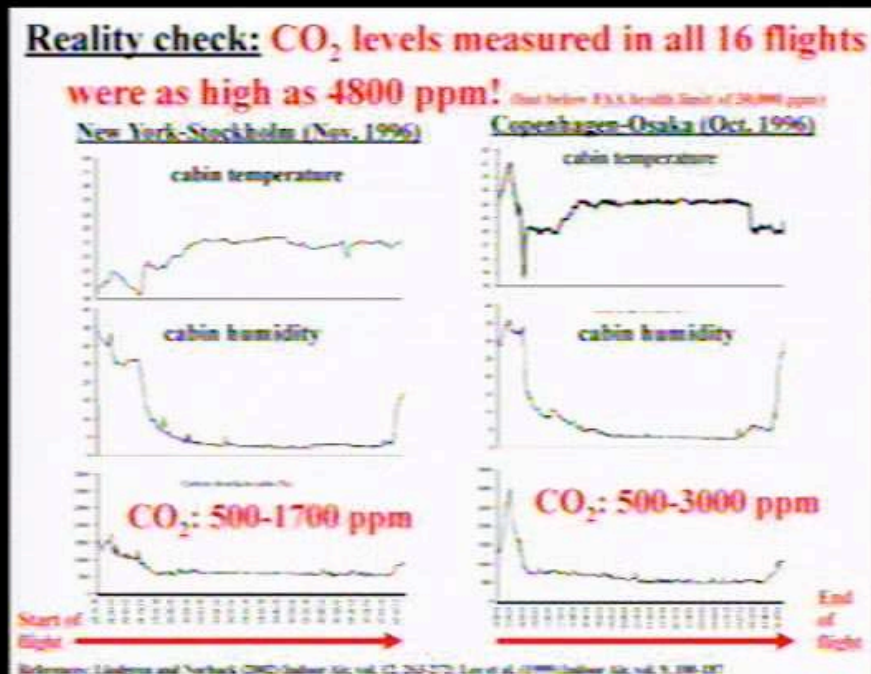
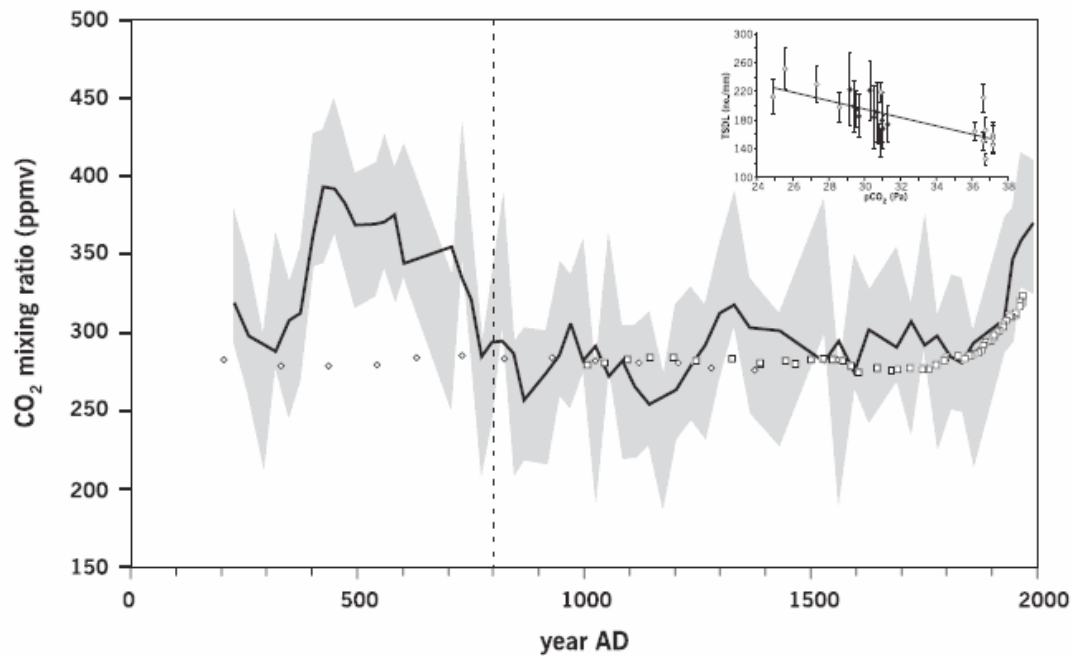


CO₂ analyzed from stomata (microscopic pores found on the under side of leaves)

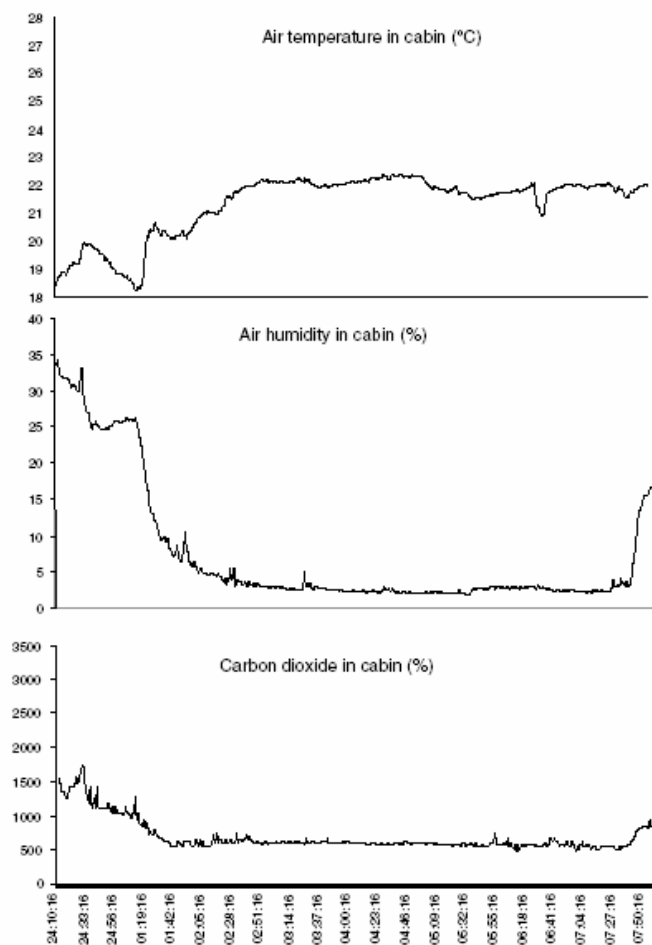
show CO₂ is highly variable with a best fit of a bathtub shape or U shape vs. the UN IPCC model of a hockey stick shape.

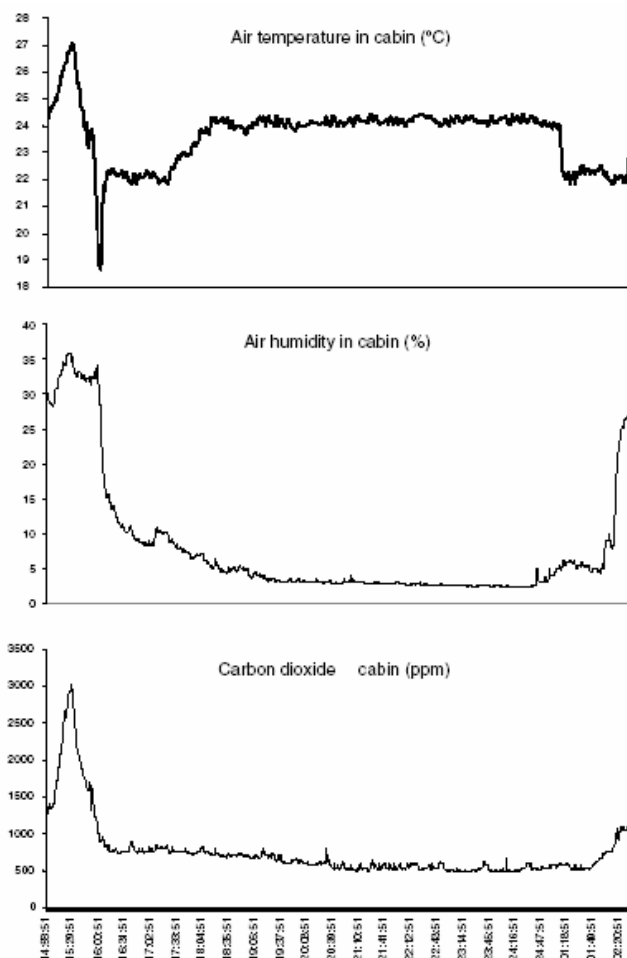
Notice the IPCC model shows no variability of CO₂ over the last 1800 to 1900 years vs.

CO₂ is found highly variable over the last 2000 years using the under side of leaves as a source.



CO₂ measured in our own airplane cabins and living rooms is much higher than the levels of concern in our outdoor environment, e.g. 380 ppm

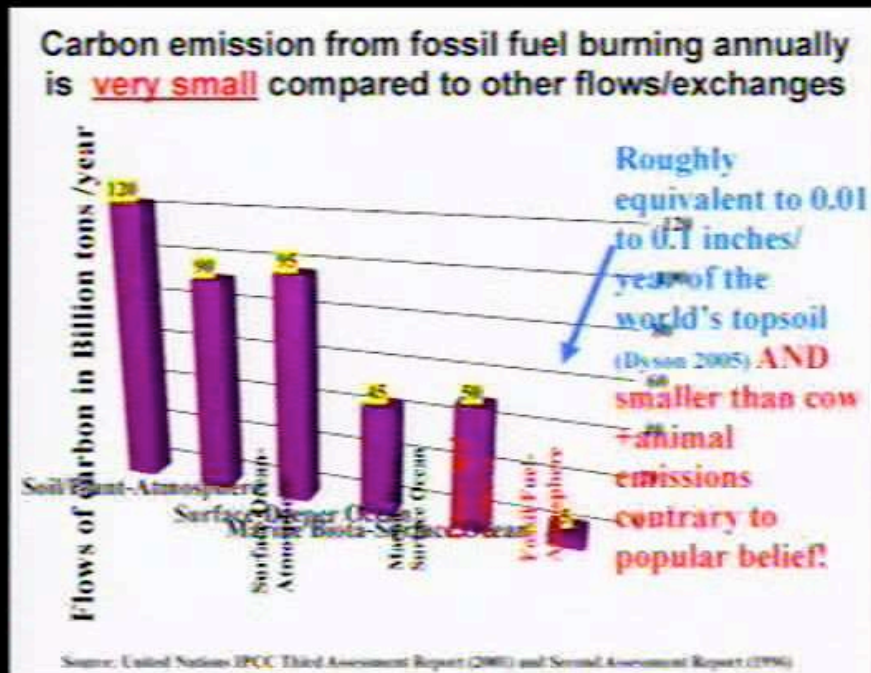




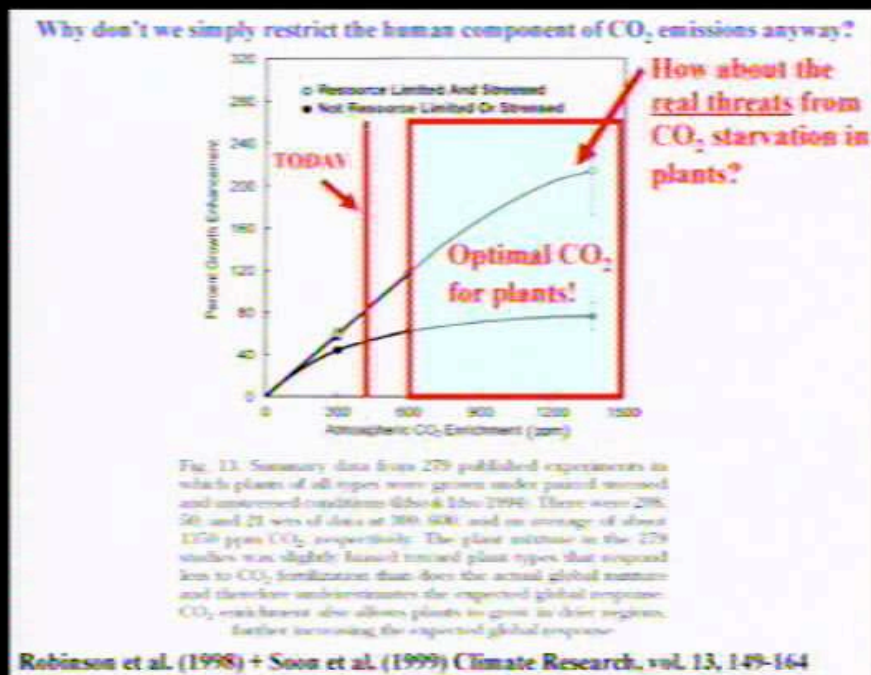
Gaggle

newsbusters.org





Fossil fuel carbon emission (5) is dramatically smaller than carbon emissions from animals (50), oceans, soils -plants (130)



Plants thrive on CO₂ with optimal levels far exceeding today's levels.

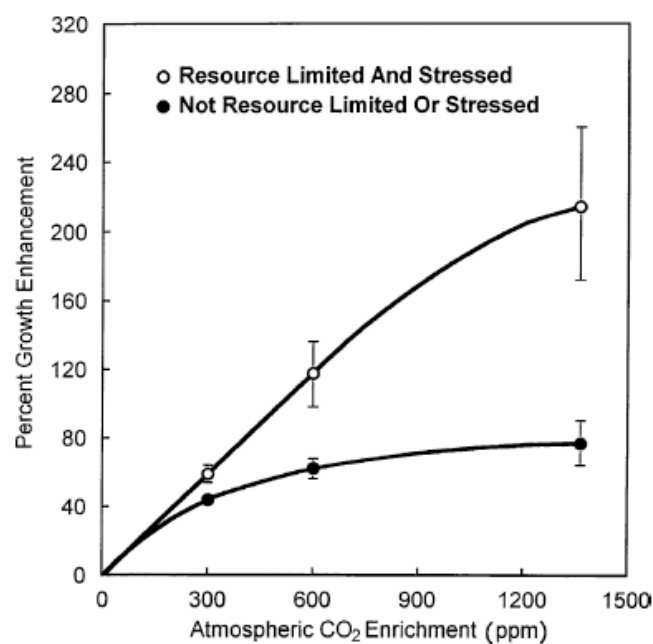


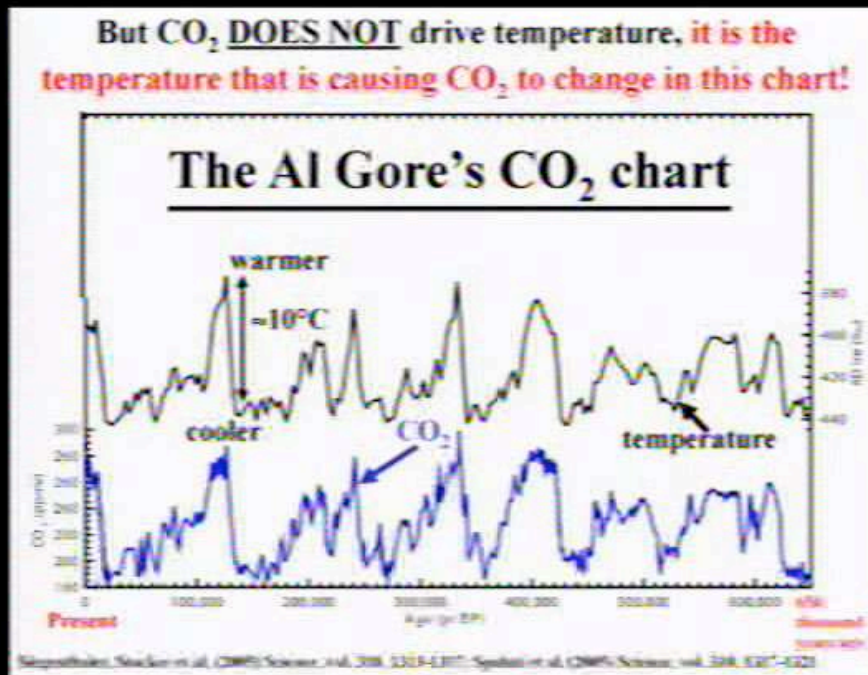
Fig. 13. Summary data from 279 published experiments in which plants of all types were grown under paired stressed and unstressed conditions (Idso & Idso 1994). There were 208, 50, and 21 sets of data at 300, 600, and an average of about 1350 ppm CO₂, respectively. The plant mixture in the 279 studies was slightly biased toward plant types that respond less to CO₂ fertilization than does the actual global mixture and therefore underestimates the expected global response. CO₂ enrichment also allows plants to grow in drier regions, further increasing the expected global response

Of CO₂, Frisbees and flatulence:

“As the Court correctly points out, ‘all airborne compounds of whatever stripe,’ *ante*, at 26, would qualify as ‘physical, chemical, ... substance[s] or matter which [are] emitted into or otherwise ente[r] the ambient air,’ 42 U. S. C. §7602(g). It follows that *everything* airborne, from Frisbees to flatulence, qualifies as an ‘air pollutant.’ This reading of the statute defies common sense.”

– p. 10 of Justice Scalia’s dissenting opinion (April 2, 2007)

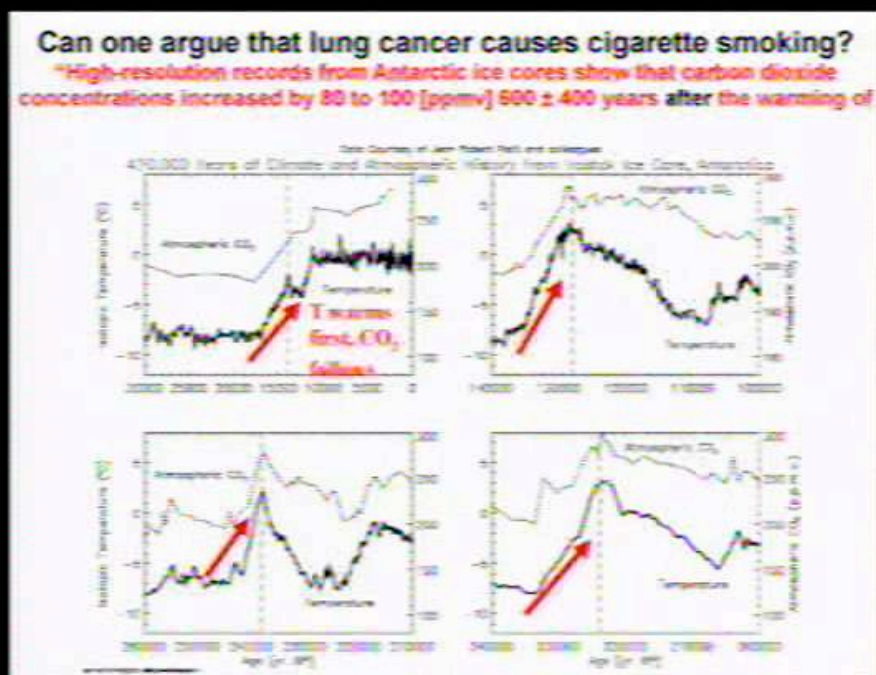
Justice Scalia's dissenting opinion.



The sun drives the temperature and temperature drives CO₂ NOT vice versa

Time period goes from left to right, i.e. present to 600,000 year ago. Top black cycle is temperature.

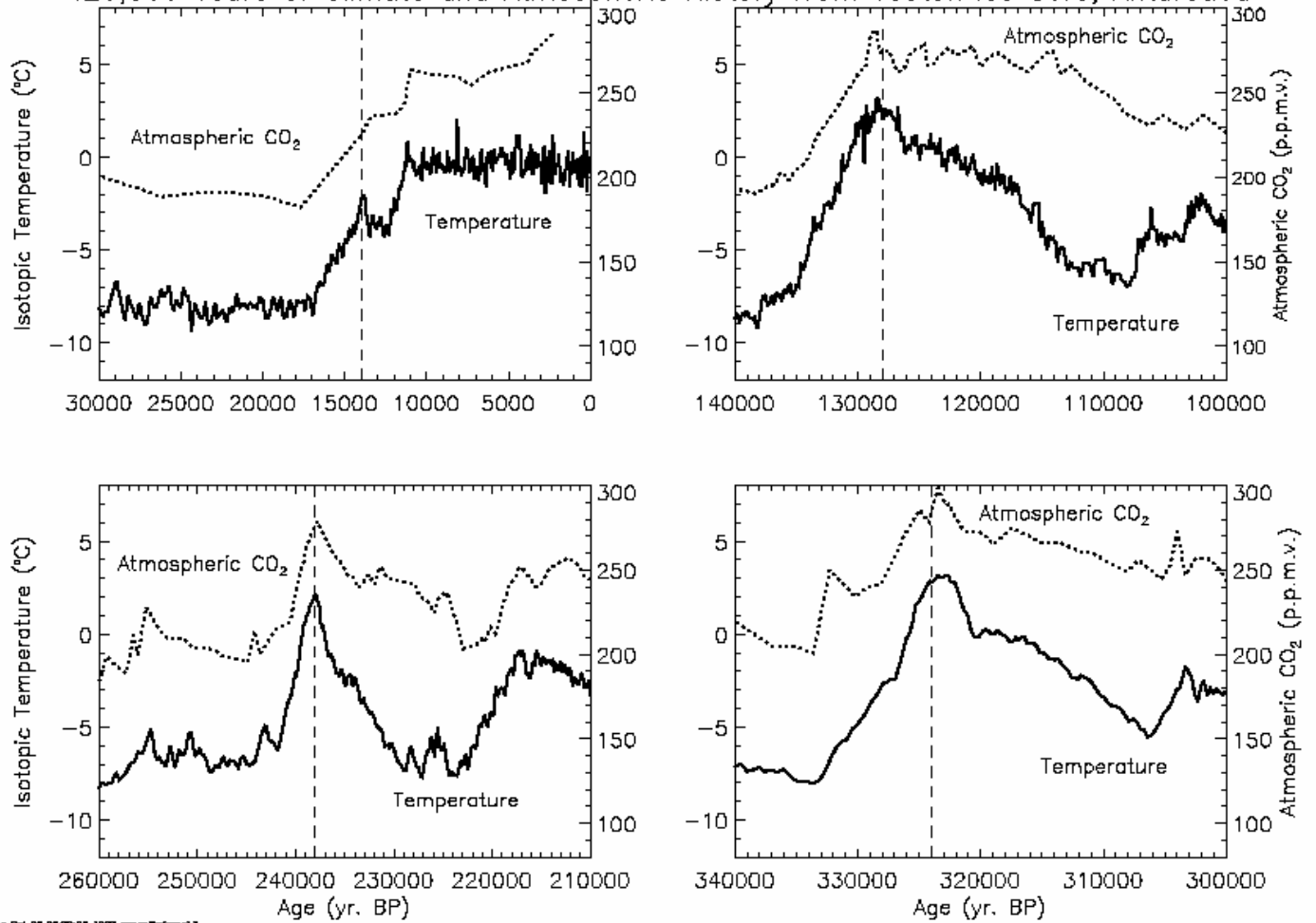
Bottom blue cycle is CO₂. Left and right vertical axis are CO₂ in parts per million (ppm)



Data shows CO₂ increasing centuries after a warming trend.
 Saying CO₂ drives our temperature is like saying lung cancer causes cigarette cigarette smoking.

Data Courtesy of Jean Robert Petit and colleagues

420,000 Years of Climate and Atmospheric History from Vostok Ice Core, Antarctica



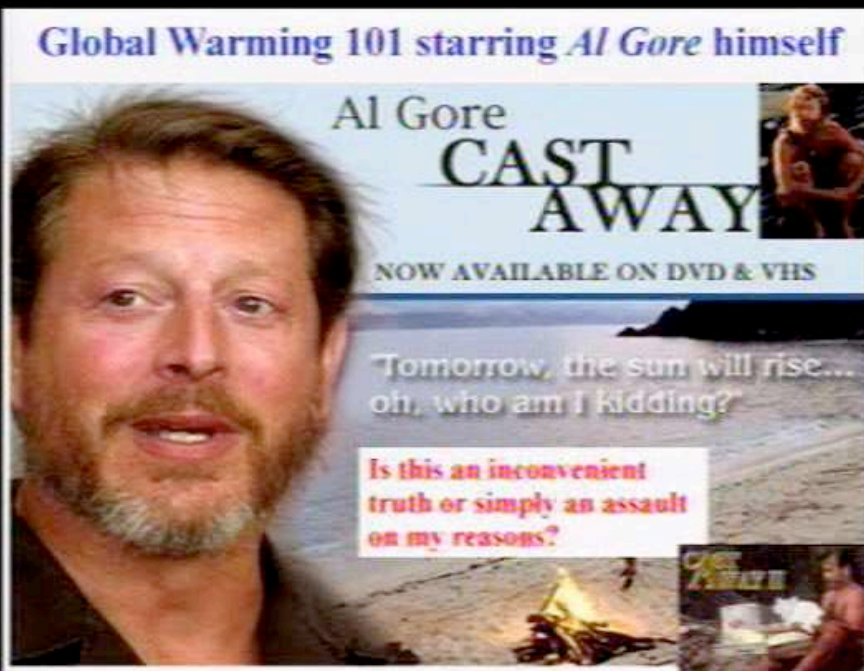
Vostok Dec 29 06:20:29 1999 gmsvstf1comp13

Gore/David are ignoring the conclusion of temperature leading CO₂
by the original authors of the EPICA ice-core project

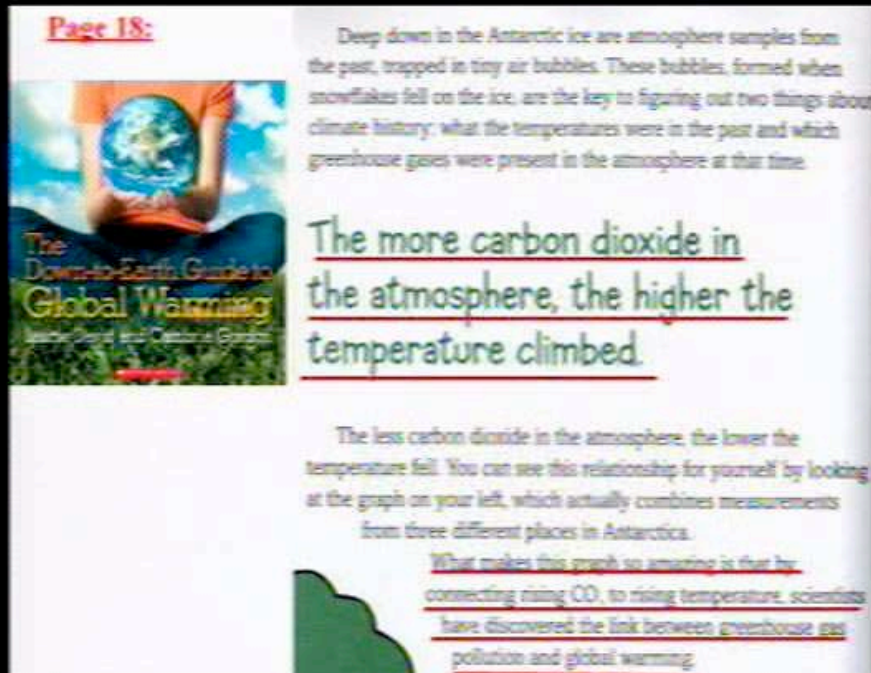
"The lags of CO₂ with respect to the Antarctic temperature over glacial terminations V to VII are 800, 1600, and 2800 years, respectively, which are consistent with earlier observations during the last four glacial cycles. [from Vostok

records]"

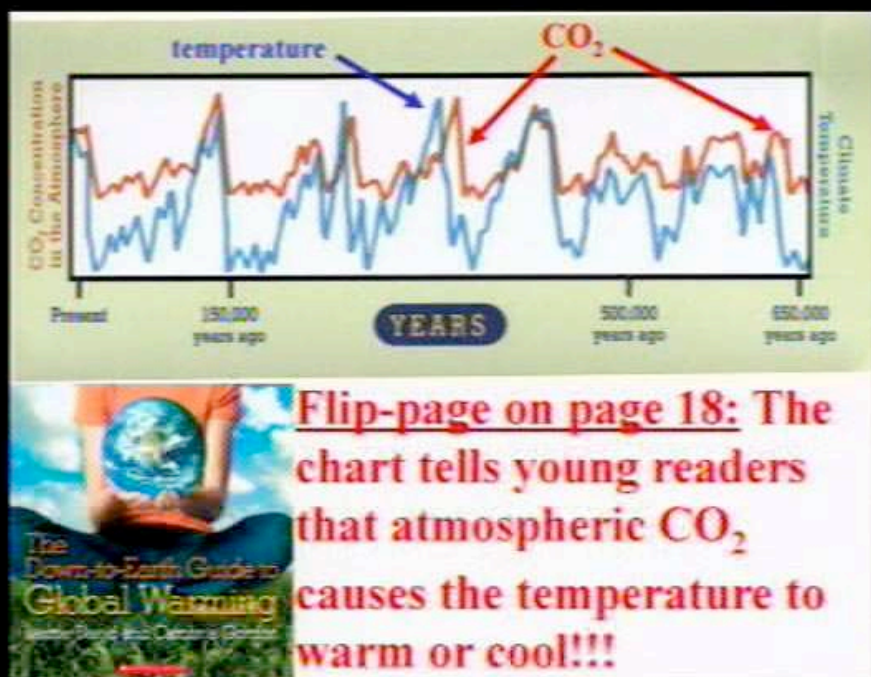
(Siegenthaler et al.,



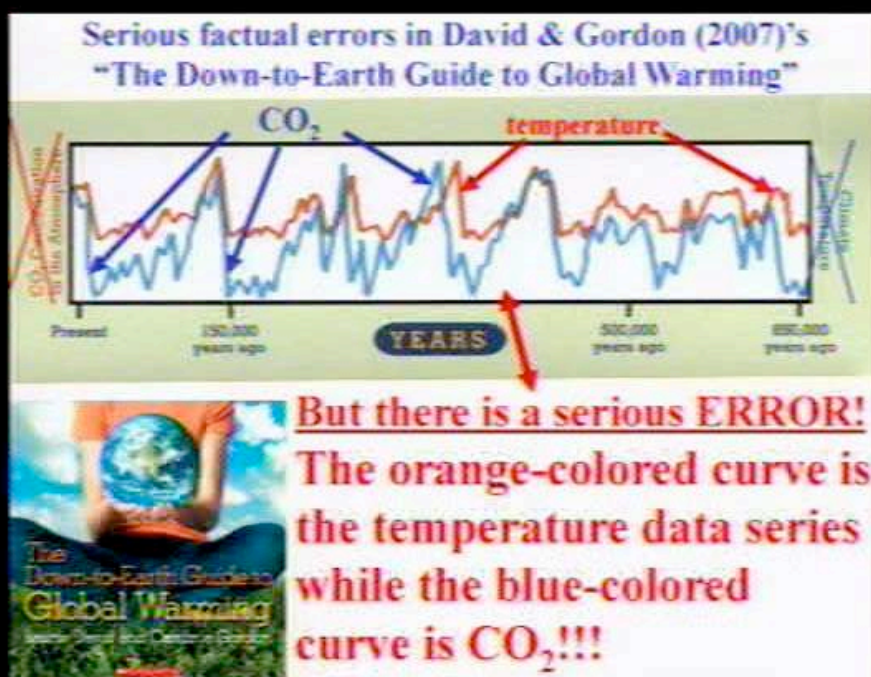
Al Gore has to declare there are 9 errors on his movie "An Inconvenient Truth"



A self appointed uneducated greenie has authored and introduced this lie into into the gullible green schools via a green text book publisher.



This same author above has it backwards, i.e. the increasing temperature causes a rise in CO₂ not vice versa



This same green author and green publisher have mislabeled the axis of the chart

“I have reviewed the figure on page 18 of The Down-to-Earth Guide to Global Warming. It appears that the labeling of the axes has been reversed. As a result, the curve labeled ‘carbon dioxide concentration’ should be labeled ‘climate temperature’, and vice versa. However, the description of the figure in the accompanying text is accurate, and it fairly represents the current state of scientific knowledge, in terms that would be comprehensible to children 8-years of age or older.” – Michael Oppenheimer (November 19, 2007)

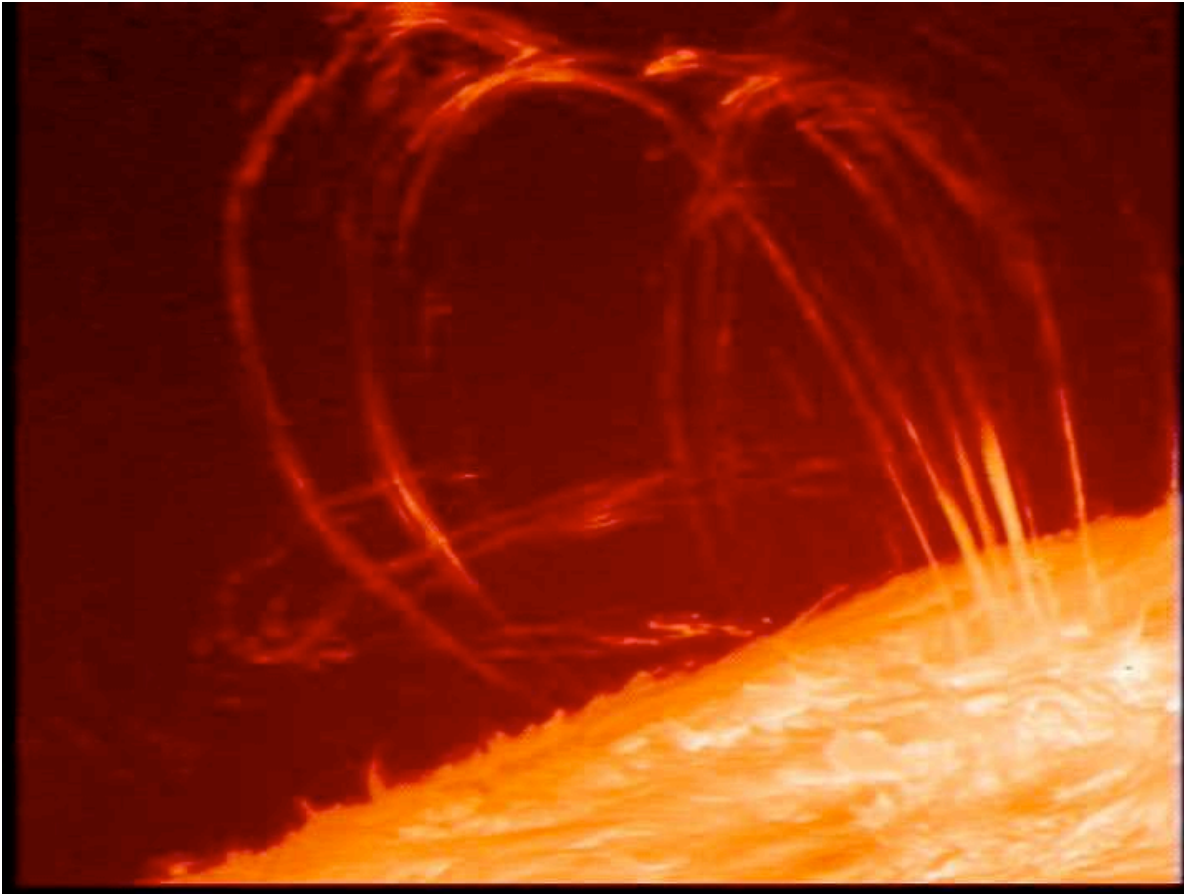
This is the statement from the publisher responding to Dr. Soon's letter regarding the green distortion.

A frank testimony on *An Inconvenient Truth*

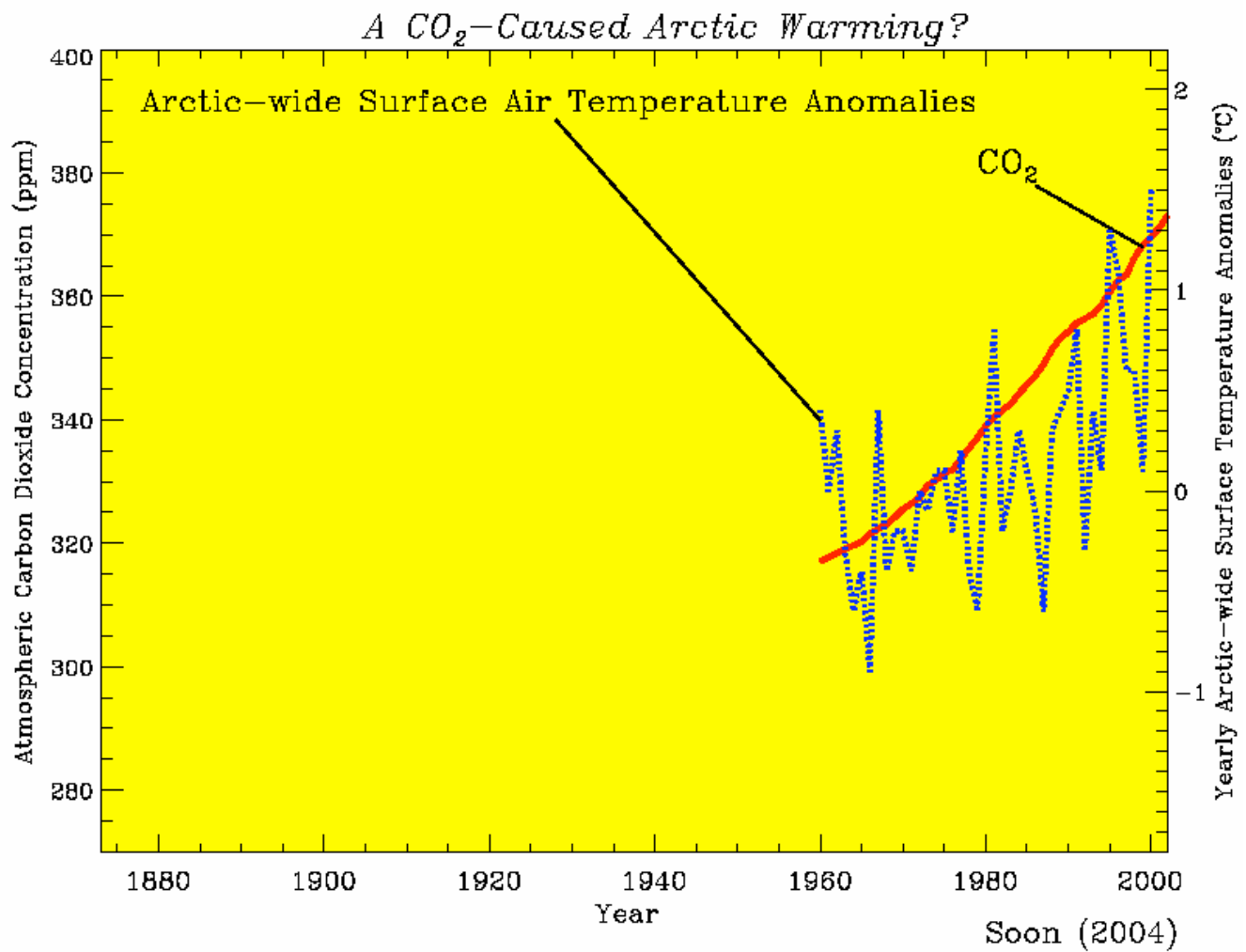
**“I really don’t
understand why they
keep showing it.”**

–McKenzie, an 18-year-old high-school student
from Northern Ontario after AIT film being
shown to him in **four different classes** (by May
2007): world history, economics, world issues,
and environment

The state educational system is continually rerunning Gore's
green propaganda receives some well deserved critical feedback

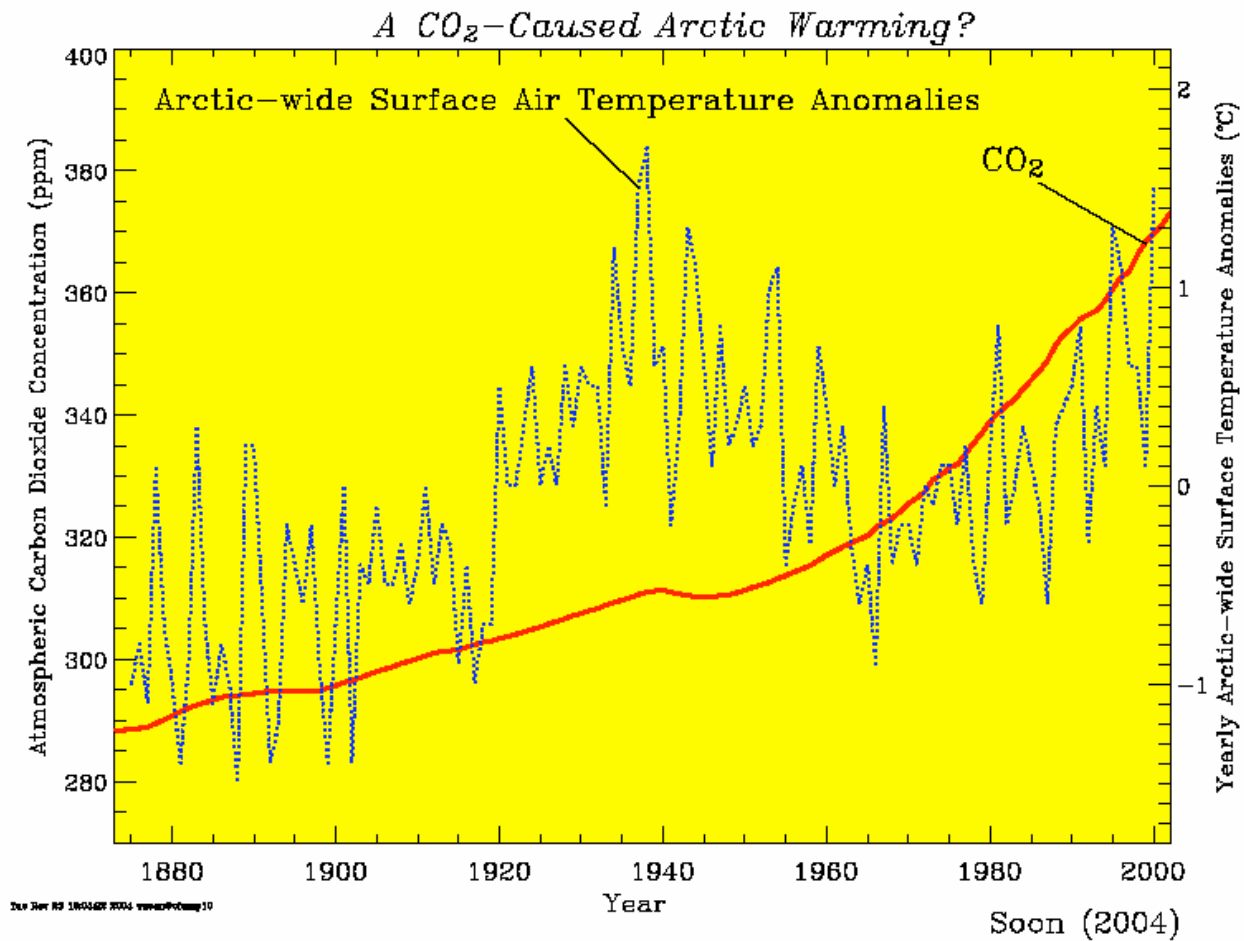


The sun drives our weather not CO2
feedback.



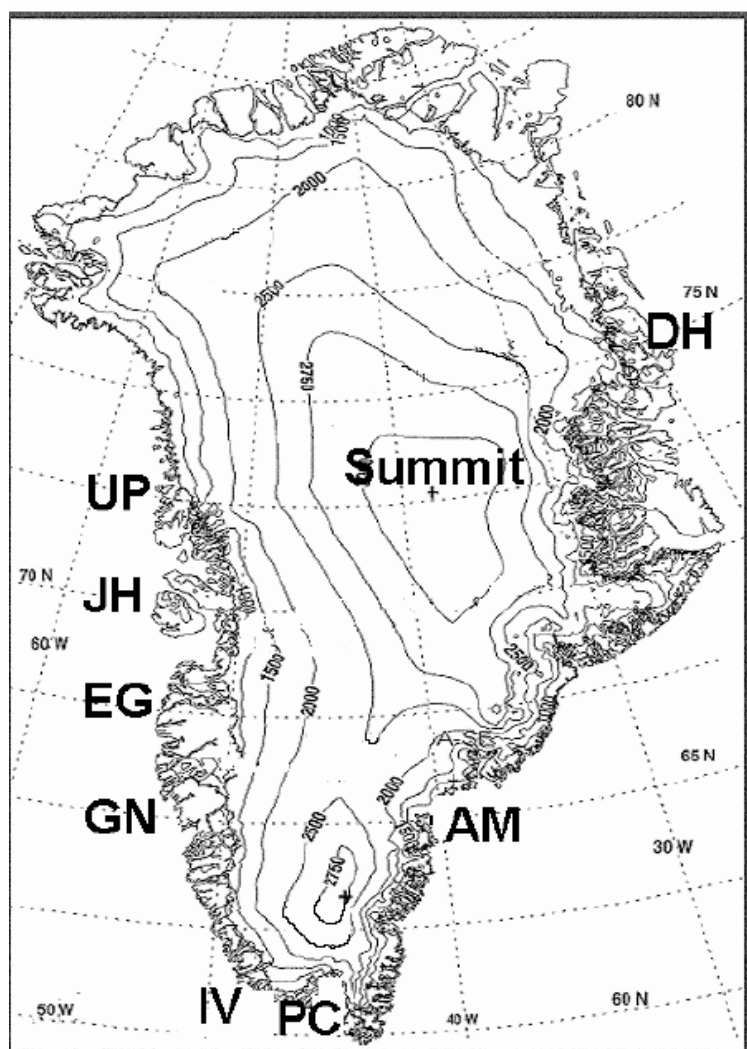
Dr. Soon uses this graph to illustrate how the green extreme want you to believe CO₂ is causing temperatures to rise and the ice to melt. They also want you to believe, that as the ice melts, there is a corresponding positive feedback compounding the increase in warming.

Dr. Soon says any warming causes CO₂ to rise, e.g. natural increases in solar radiation

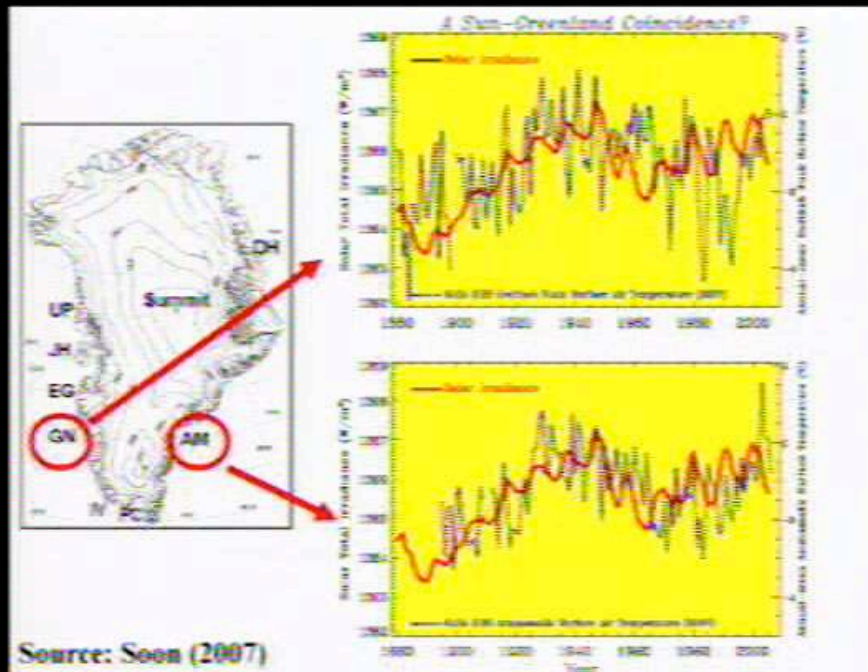


This graph shows the poor overall correlation of the hypothesis that CO₂ is causing global warming which the green community want you to believe.

The hypothesis only "fits" from about 1965 and on. The theory does not fit for the time periods before. In fact there is relative little CO₂ change with dramatic increases in temperature during 1910 to 1940 which is more of a negative correlation.



Greenland

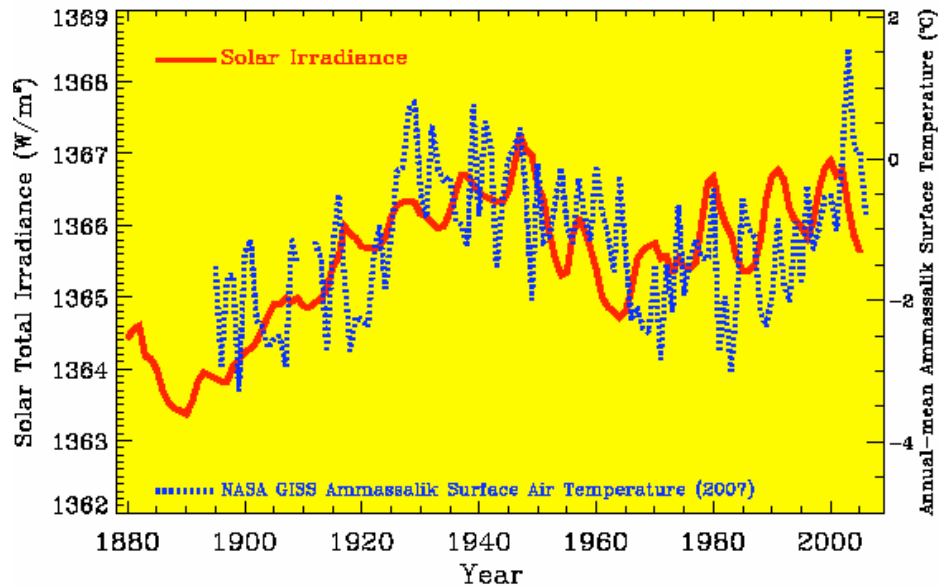
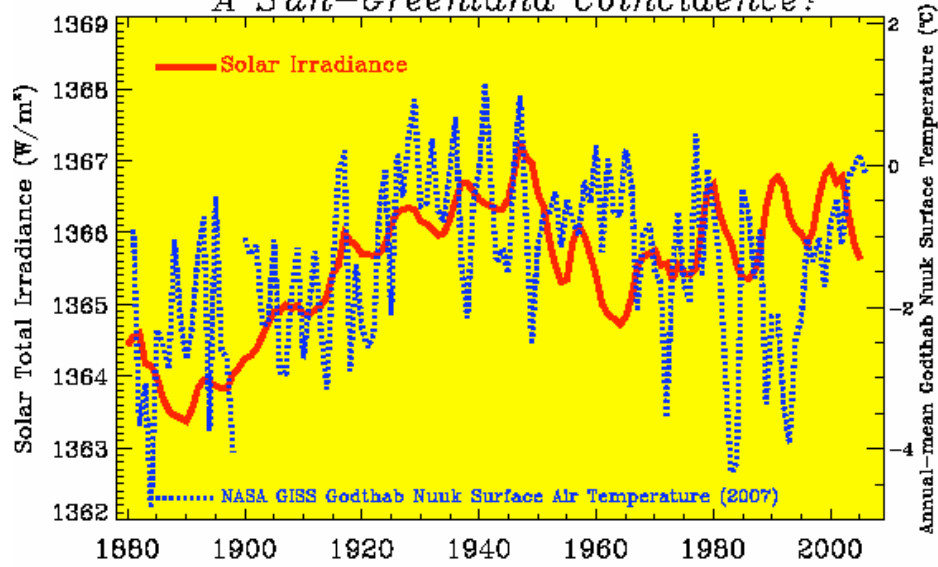


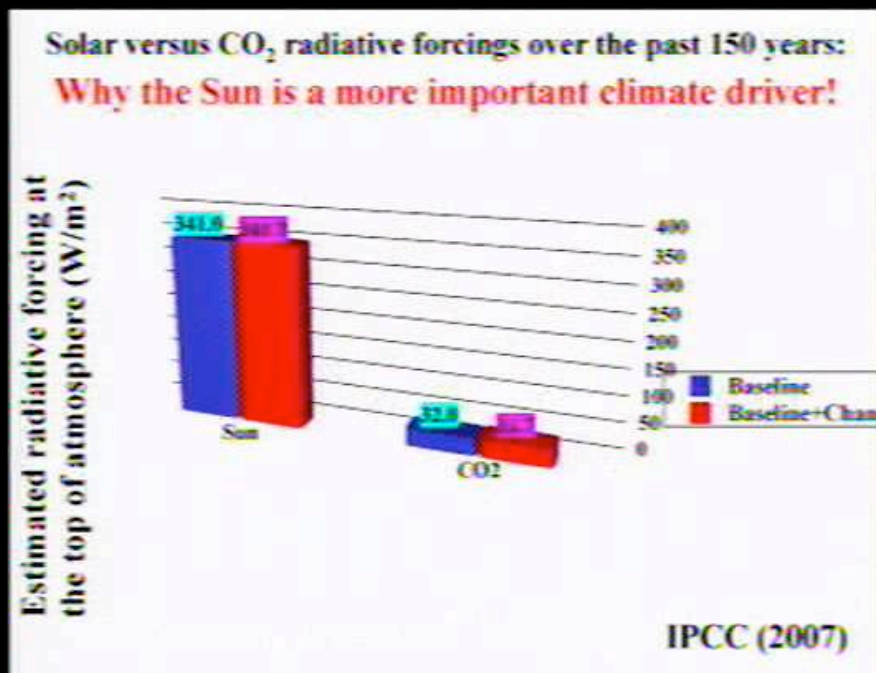
The top and bottom charts above and more clear images below, show how the sun's energy irradiance is also highly correlated to temperature over Greenland, i.e. statistically correlated with a high confidence level. The sun's level. The sun's energy irradiance in red has been overlaid on Greenland's temperature in two locations.

The top chart represents location GN and the bottom chart represents location location AM on Greenland.

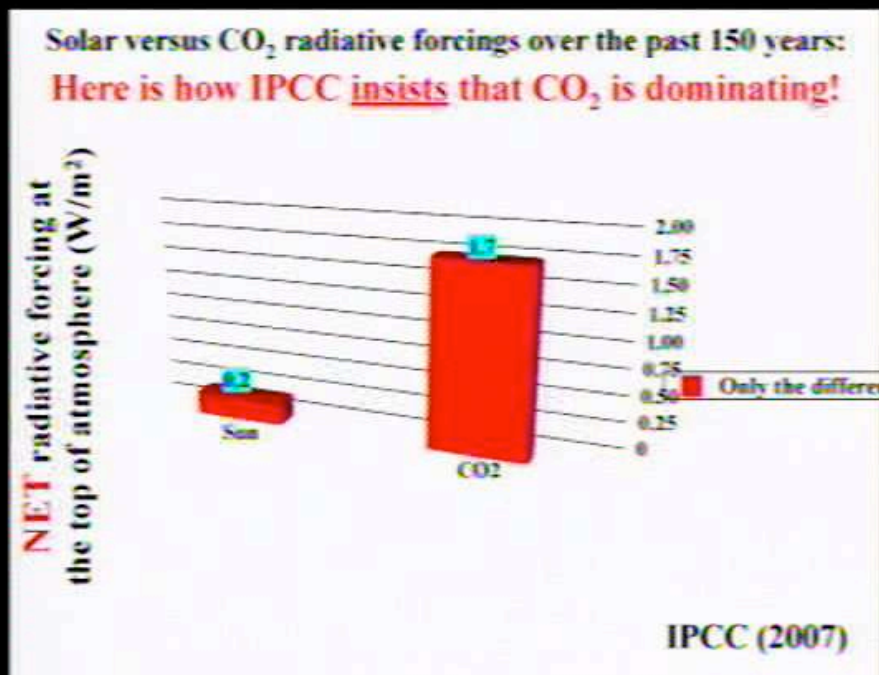
i.e. The temperature fluctuations are highly correlated to and caused by the Sun NOT by CO2!

A Sun-Greenland Coincidence?





CO₂ radiant force is 32 watts/meter squared compared to the sun's irradiative force of 341 watts/meter squared. The sun is over 10 times more powerful. All energy is driven by the sun, there is no other source of energy input into the climate system. CO₂ energy cannot dominate over the sun's energy.

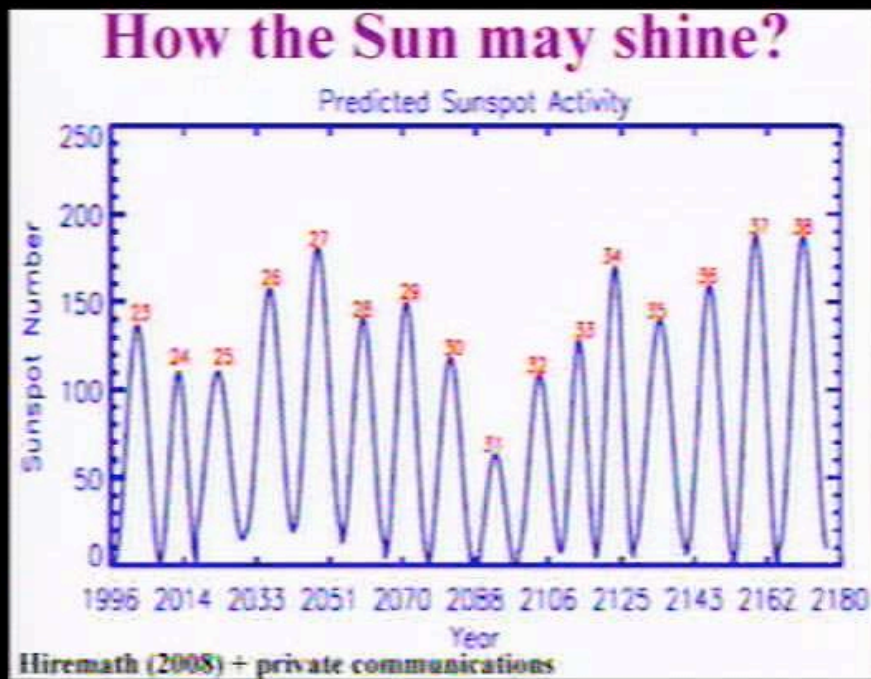


Dr. Soon's strongly disagrees with the Intergovernmental Panel on Climate Change (IPCC) representation of the sun's net energy as 0.2. He says it is at least 1.0, i.e. the IPCC have distorted the power of the sun to exaggerate the effect of CO₂.



If the physical body of Willie Soon represents CO₂, he could have little to no effect upon the physical body of football star Brady representing the climate.

If 'Refrigerator Perry' was the Sun, and he slammed himself into Brady representing the Climate, then you would see the climate change.



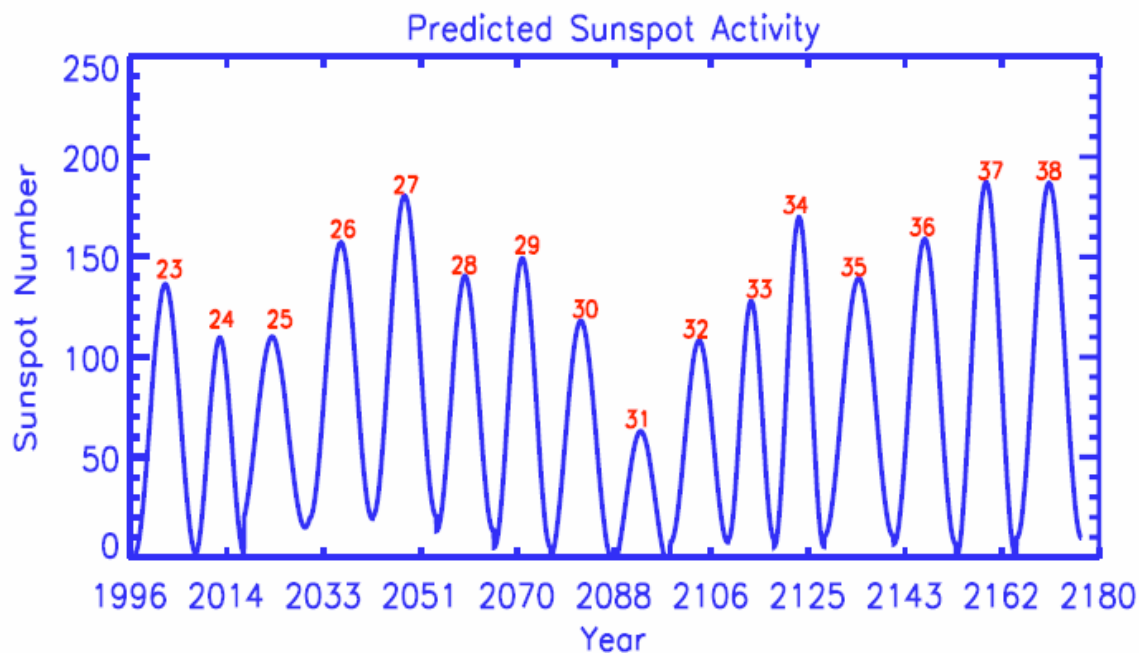
The sun determines and explains the variability of earth temperature.


The IPCC says the CO2 will be worse in a 100 years.

Dr. Soon says, CO2 is not explaining the temperature variability now and it will not explain it in the future.

Using spot activity history to forecast the future is a better statistical tool to predict possible future climate outcomes

The future is still unknown and cannot be predicted with 100% confidence even based on highly correlated historical models






**Are you worried about global warming?
You do not need to be!
You can do something yourself!**


**You can now store
CO₂ in your own**

Personal CO₂-Box!!



**Now only
€ 499,-**

**Away with that
guilty feeling!**



**No more
nightmares
about
Al Gore!**

The Personal CO₂-Box is simply amazing! With the CO₂-Box you can contribute to a better environment every day!

Planting, organizing a CO₂-compensation with your neighborhood!

The Personal CO₂-Box is a completely new idea in green! You can be step ahead of the crowd and be the first in your class!

**Don't compromise
on design!
Simply installed
in the existing
kitchen!
Free! Simply CO₂
going to the
sea!
With sustainable
plant then guaranteed!
Designed for real
sustainability in
action!**

No artificial
materials!
Non-toxic!
Guaranteed
sustainable
equipment!
Keep the class
well, just at the
party will be
easier on the
building of real
good power
plants in China!

Think about your offspring, spend your money now!

If you are concerned about CO2, you can now buy a box of it for 4.98 Euros, Euros, complete with a free CO2 pump to save the planet, the polar bears, the Arctic, Al Gore, et al. See advertisement above.

It is the business of the future to be dangerous; and it is among the merits of science that it equips the future for its duties – Alfred North Whitehead (1861-1947)

Alfred Whitehead is a famous English mathematician. Dr. Soon used this quote to end his presentation, saying how important it is to make sure social and political forces will not corrupt science.

Amen to that.

You may link up at the site below to review and order the 3 DVD pack pack which includes Dr. Willie Soon's talk. All the speakers are a must hear hear and view. It is well worth the price for 5 hours of testimony regarding the rising up of the American sleeping tiger, property owners, across America.

- http://www.goodneighborlaw.com/Forum_GN/2008Forum/4-15DVDs.htm

John R. Venrick
Enumclaw, Washington

Retired - The Boeing Company
30 Years
Electrical Systems
Engineering Systems
Computer Systems
Resource Management Systems
B.S. Electrical Engineering - Montana State University
M.S. Applied Science - Montana State University
Major Industrial Engineering
Minor in Business Administration